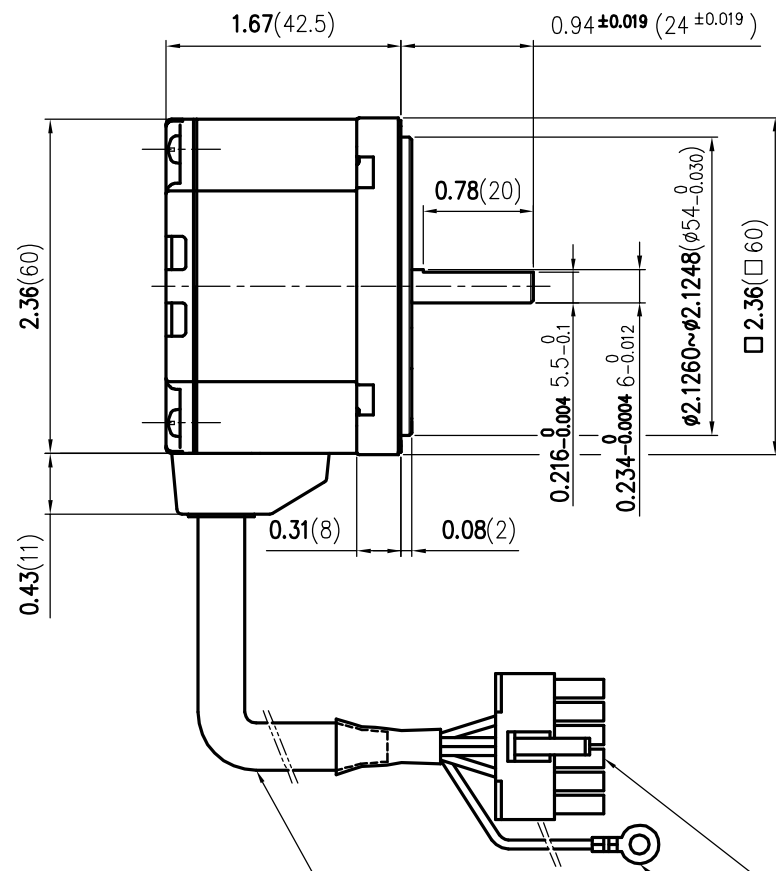
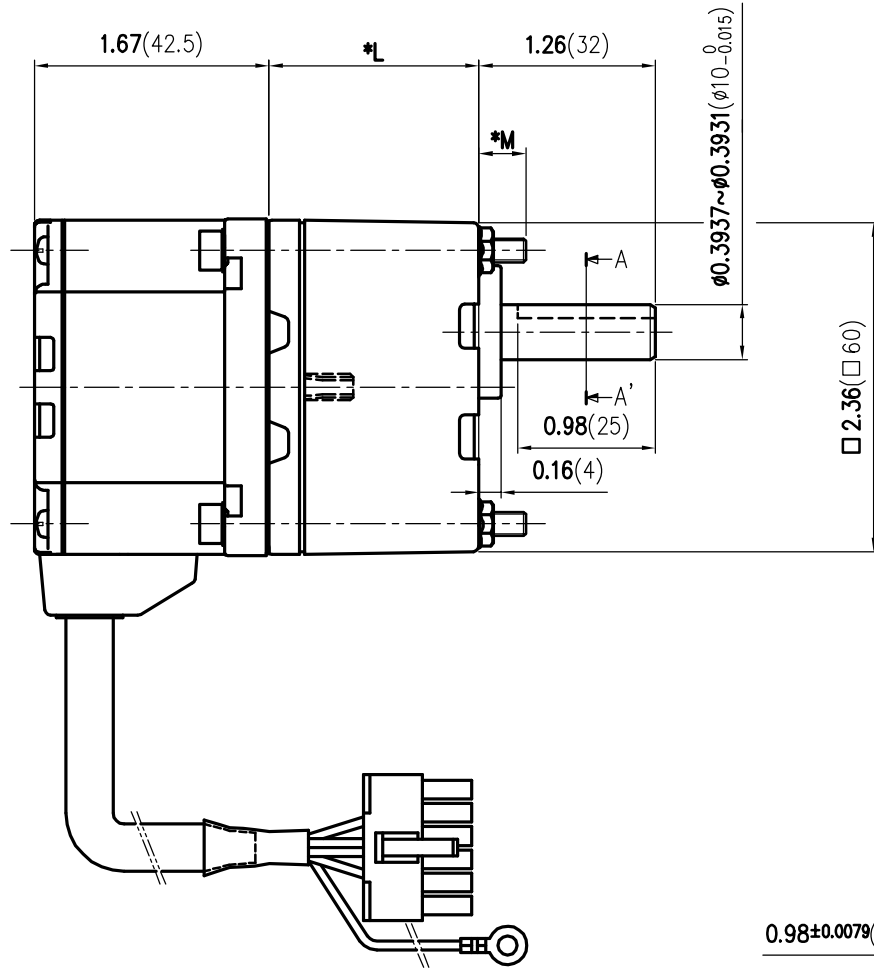


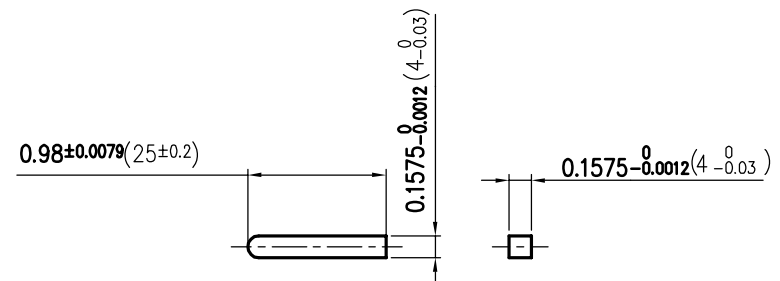
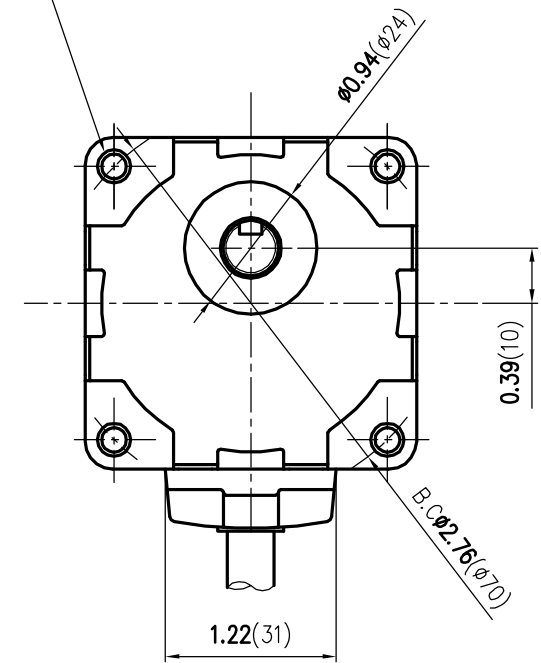
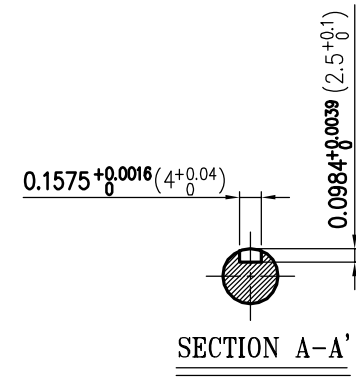
MOTOR



GEARED MOTOR



4-φ0.18(φ 4.5) THRU HOLE



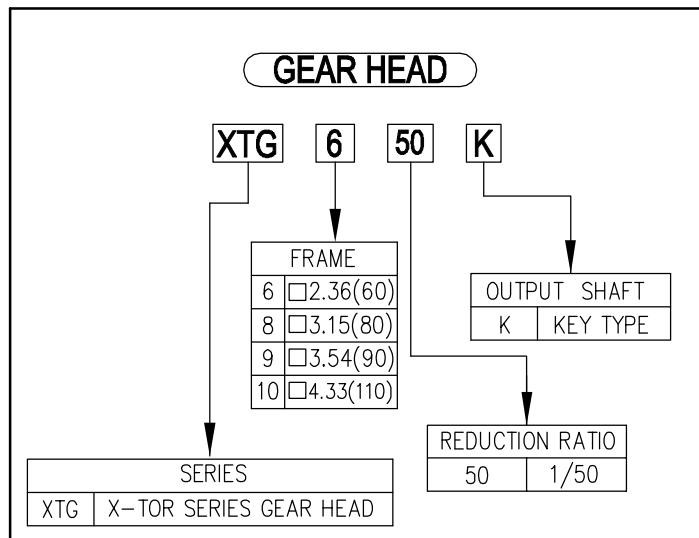
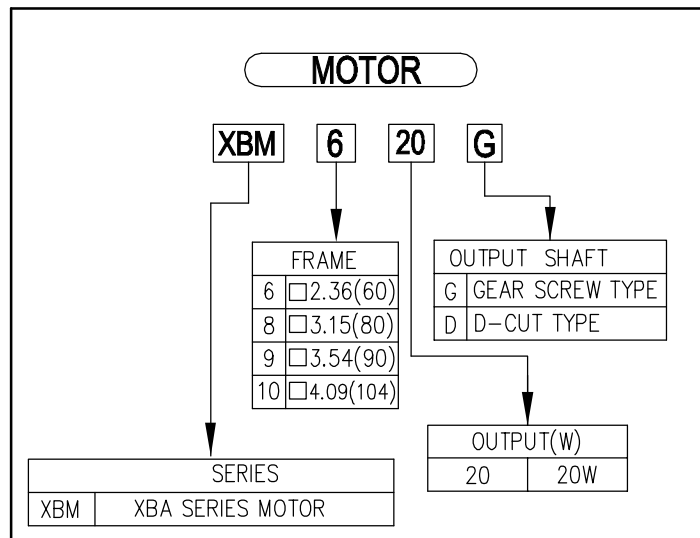
KEY

TERMINAL : 5556T(MOLEX)
CONNECTOR HOUSING : 5557-12R(MOLEX)

GROUND(M4)(0.17DIA.)

MOTOR CABLE φ0.31(φ8), 20inch(500mm) LENGTH

DATE		SIGN		변경 내용		변경 이유	
MATERIAL		표면처리		SCALE		公差 TOLERANCE	
DRAWN		DESIGN		CHECK		APPR.	
B.H.LEE		Y.M.WON		S.H.CHA		B.Y.JEONG	
SPG Co., Ltd.				작성일 DATE		도번 DWG NO.	
BLDC GEARED MOTOR ASS'Y				2013.05.03		2X-0001-0905	
XBA620()-□K SERIES(1/2 PAGE)							



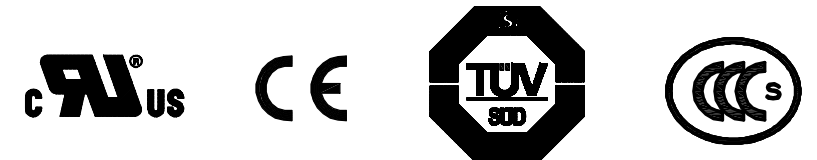
※ MOTOR / PARALLEL SHAFT GEARHEAD

PRODUCT SERIES	MOTOR	GEAR HEAD	GEAR RATIO	*L inch(mm)	SCREW SET	SCREW SET PROTRUDING LENGTH *M inch(mm)	PERMISSIBLE OVERHANG LOAD			
							0.3937(10mm) FROM END OF THE OUTPUT SHAFT		0.7874(20mm) FROM END OF THE OUTPUT SHAFT	
							N	Kgf(lbs.)	N	Kgf(lbs.)
XBA BLDC SPEED CONTROL SYSTEM (AC INPUT)	XBM620G	XTG6 SERIES SEE GEARHEAD CODING SYSTEM	5	1.34(34)	M4*L50	0.29(7.5)	100	22.03(10)	150	33.04(15)
			10, 15, 20				150	33.04(15)	200	44.05(20)
	XBM620D		30, 50, 100	1.50(38)	M4*L55	0.33(8.5)	200	44.05(20)	300	66.08(30)
			200	1.69(43)	M4*L60	0.33(8.5)				

ITEM	SPEED CONTROL RANGE [r/min.]	PERMISSIBLE TORQUE-GEARED MOTOR							
		20~400	10~200	6.7~133	5~100	3.3~67	2~40	1~20	0.5~10
	GEAR RATIO	5	10	15	20	30	50	100	200
	XBA620()-□K	0.22 1.91(2.2)	0.45 3.91(4.5)	0.68 5.90(6.8)	0.90 7.81(9.0)	1.3 11.28(13)	2.1 18.23(21)	4.2 36.45(42)	6.0 52.08(60)

NOTE

- UNIT : INCH (mm)
- IP PROTECTION : IP65
- CERTIFICATION STATUS : UL, CE, TUV, CCC



날 짜	서 명	변 경 내 용	변 경 이 유
DATE	SIGN	NOTE	REVISION
재 질	표 면 처 리	척 도	공 차
MATERIAL	SURFACE FINISH	SCALE	TOLERANCE
제 도	설 계	검 도	승 인
DRAWN	DESIGN	CHECK	APPR.
B.H.LEE	Y.M.WON	S.H.CHA	B.Y.JEONG
도 명			
BLDC GEARED MOTOR ASS'Y			
XBA620()-□K SERIES(2/2 PAGE)			
SPG SPG Co., Ltd.		작 성 일	도 번
		DATE	DWG NO.
		2013.05.03	2X-0001-0918