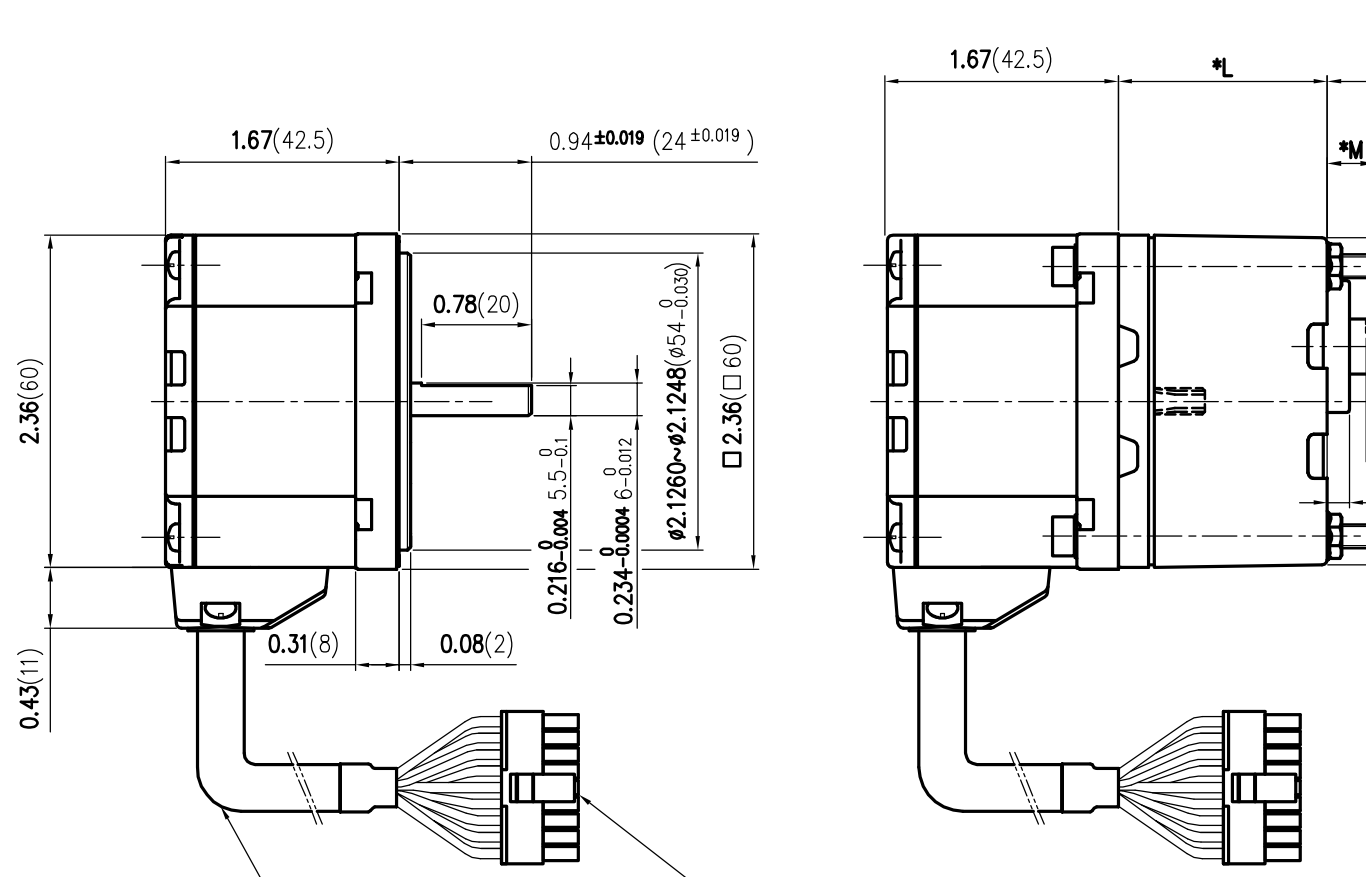


MOTOR

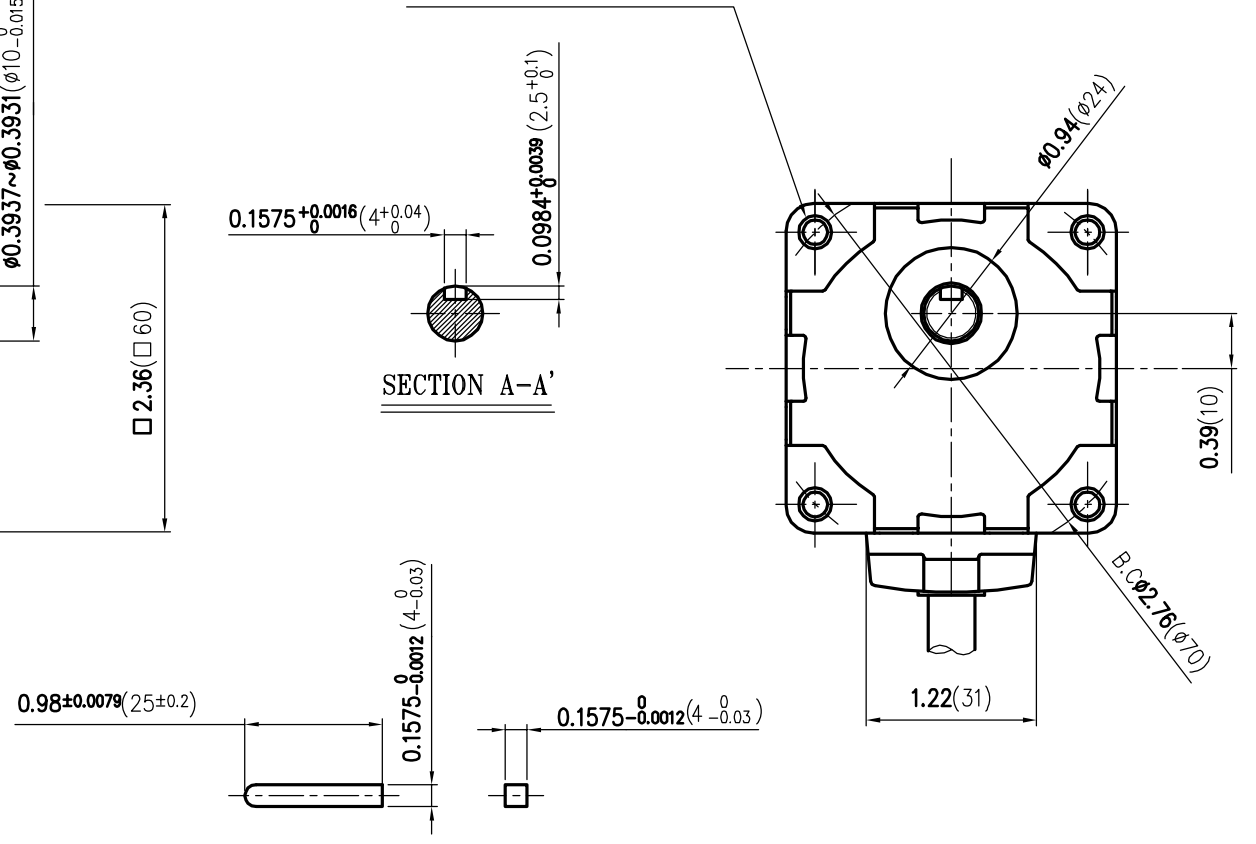
GEARED MOTOR



CONNECTOR HOUSING : 43645-0900(MOLEX)
 TERMINAL : 43030-0001(MOLEX)

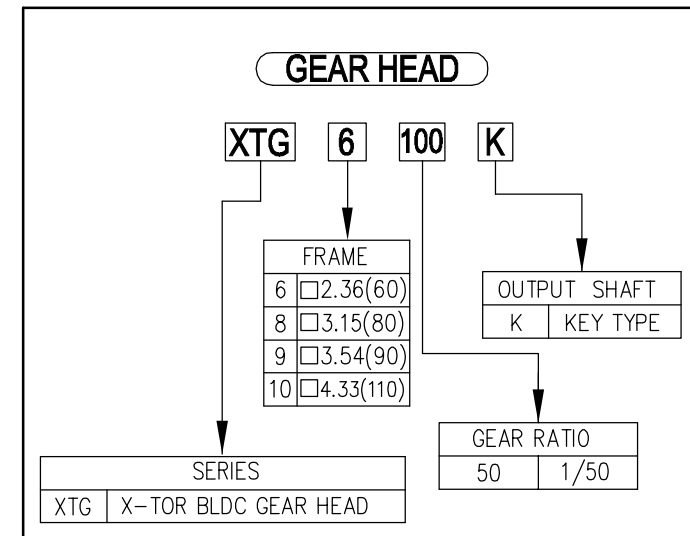
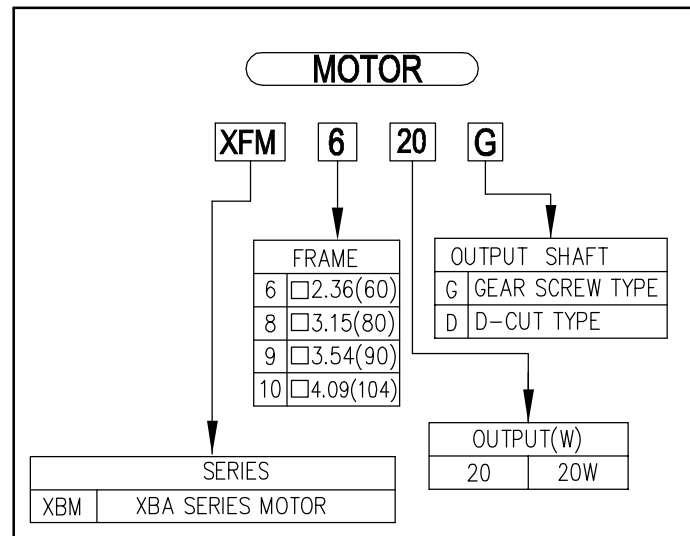
MOTOR CABLE $\phi 0.31(\phi 8)$, 20inch(500mm) LENGTH

4- $\phi 0.18(\phi 4.5)$ THRU HOLE



KEY

DATE		SIGN		NOTE		REVISION	
MATERIAL		SURFACE FINISH		SCALE	1/1	TOLERANCE	±0.04(1.0)
DRAWN	DESIGN	CHECK	APPR.	BLDC GEARED MOTOR ASS'Y			
B.H.LEE	Y.M.WON	S.H.CHA	B.Y.JEONG	XFA630()- □K SERIES(1/2 PAGE)			
SPG Co., Ltd.				DATE	2013.05.03	DWG NO.	2X-0001-0908



※ MOTOR / PARALLEL SHAFT GEARHEAD

PRODUCT SERIES	MOTOR	GEAR HEAD	GEAR RATIO	*L inch(mm)	SCREW SET	SCREW SET PROTRUDING LENGTH *M inch(mm)	PERMISSIBLE OVERHANG LOAD			
							0.3937(10mm) FROM END OF THE OUTPUT SHAFT		0.7874(20mm) FROM END OF THE OUTPUT SHAFT	
							N	Kgf(lbs.)	N	Kgf(lbs.)
XFA BLDC SPEED CONTROL SYSTEM (DC INPUT)	XFM630G	XTG6 SERIES SEE GEARHEAD CODING SYSTEM	5	1.34(34)	M4*L50	0.29(7.5)	100	22.03(10)	150	33.04(15)
			10, 15, 20				150	33.04(15)	200	44.05(20)
	XFM630D		30, 50, 100	1.50(38)	M4*L55	0.33(8.5)	200	44.05(20)	300	66.08(30)
			200	1.69(43)	M4*L60	0.33(8.5)				

ITEM	SPEED CONTROL RANGE [r/min.]	PERMISSIBLE TORQUE-GEARED MOTOR							
		N-M / [kgf-cm(lb-in)]							
		20~400	10~200	6.7~133	5~100	3.3~67	2~40	1~20	0.5~10
	GEAR RATIO	5	10	15	20	30	50	100	200
	XFA630()-□K	0.22 1.91(2.2)	0.45 3.91(4.5)	0.68 5.90(6.8)	0.90 7.81(9.0)	1.3 11.28(13)	2.1 18.23(21)	4.2 36.45(42)	6.0 52.08(60)

NOTE

1. UNIT : INCH (mm)
2. IP PROTECTION : IP65

DATE		SIGN		NOTE		REVISION	
재질	표면처리	척도	1/1	공차	±0.04(1.0)		
제도	설계	검도	승인	BLDC GEARED MOTOR ASS'Y XFA630()-□K SERIES(2/2 PAGE)			
B.H.LEE	Y.M.WON	S.H.CHA	B.Y.JEONG				
DATE		DWG NO.		2X-0001-0908			

△
△
△