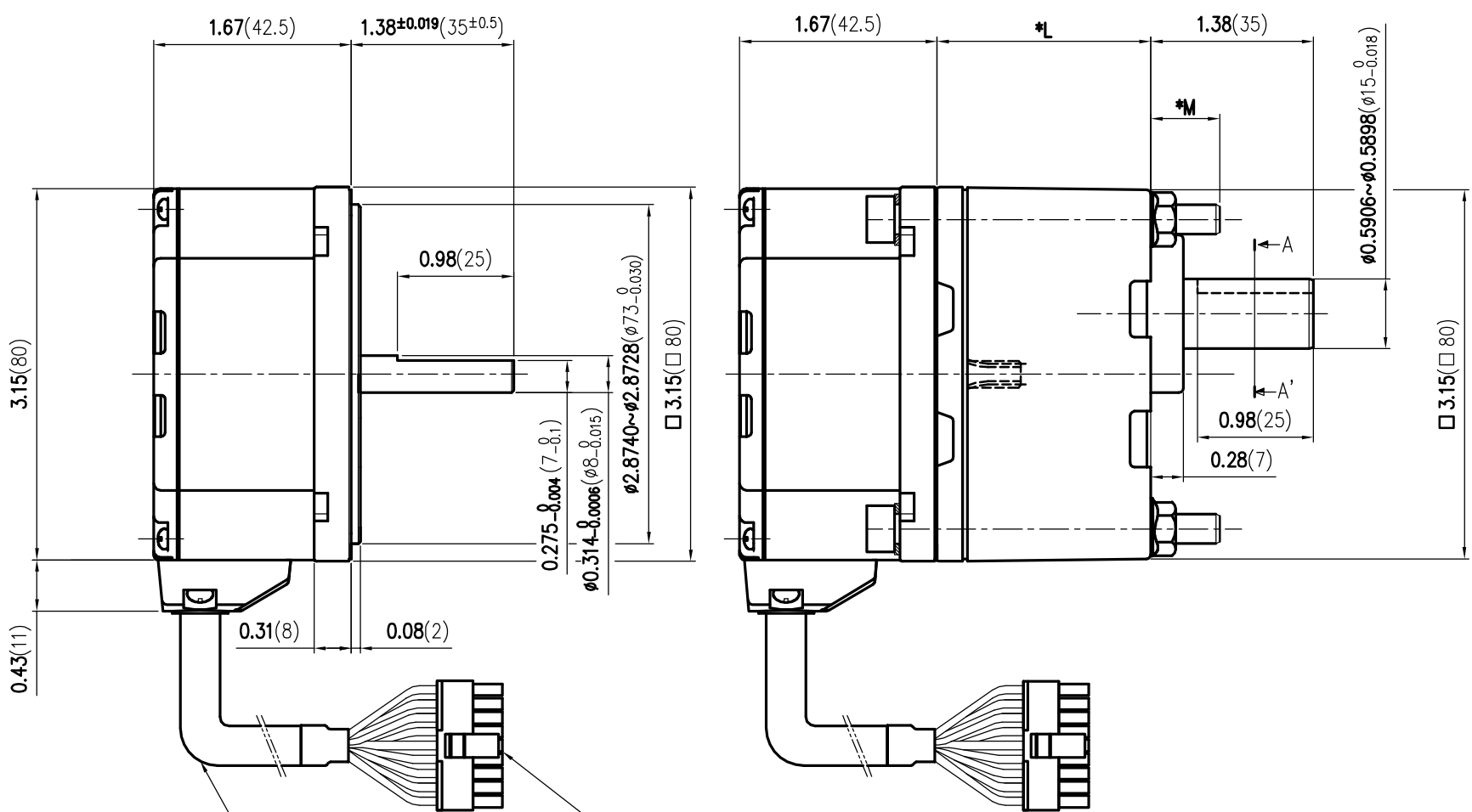


MOTOR

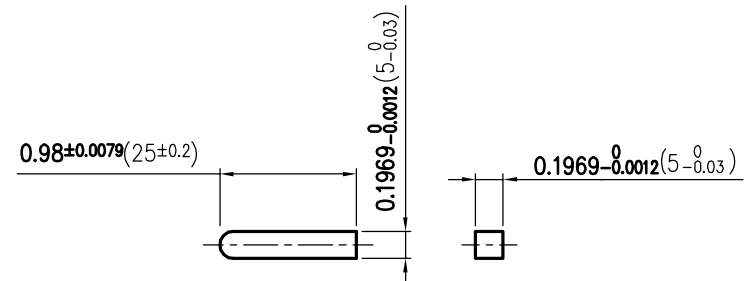
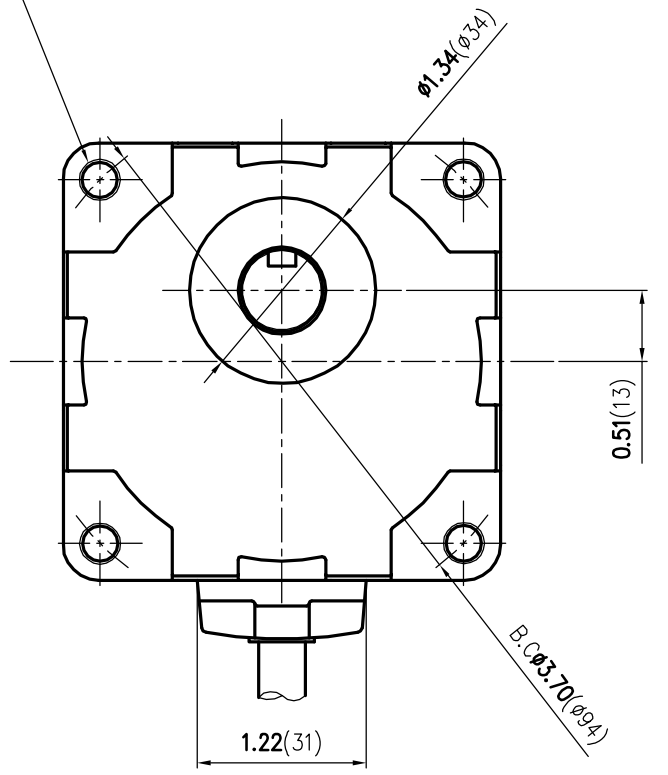
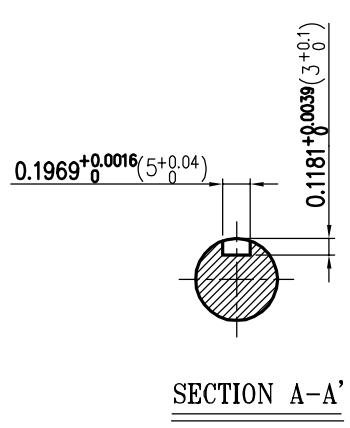
GEARED MOTOR



CONNECTOR HOUSING : 43645-0900(MOLEX)
 TERMINAL : 43030-0001(MOLEX)

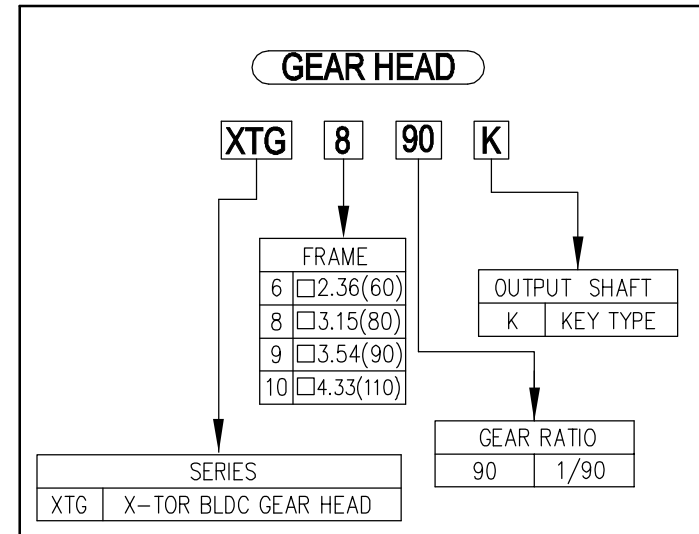
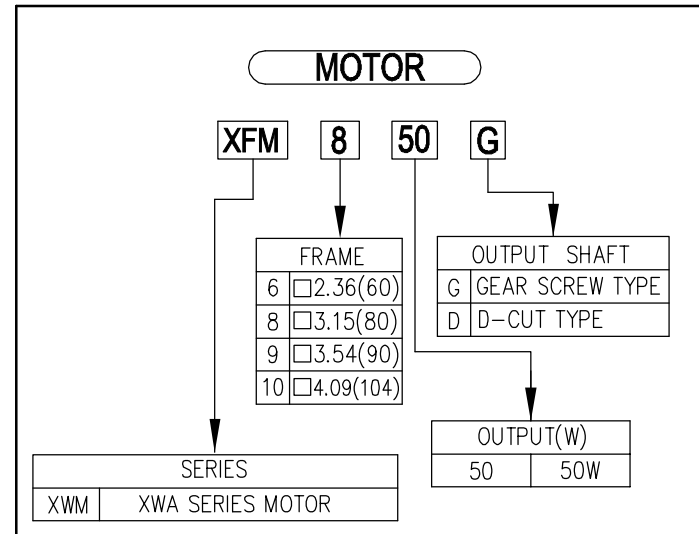
MOTOR CABLE φ0.31(φ8), 20inch(500mm) LENGTH

4-φ0.256(φ6.5) THRU HOLE



KEY

DATE		SIGN		변경 내용		변경 이유	
MATERIAL		SURFACE FINISH		척도	1/1	공차	±0.04(1.0)
제도	설계	검도	승인	도명			
DRAWN	DESIGN	CHECK	APPR.	NAME			
B.H.LEE	Y.M.WON	S.H.CHA	B.Y.JEONG	BLDC GEARED MOTOR ASS'Y XFA850()- □K SERIES(1/2 PAGE)			
SPG Co., Ltd.		작성일	2013.05.03	도번	2X-0001-0909		
		DATE		DWG NO.			



※ MOTOR / PARALLEL SHAFT GEARHEAD

PRODUCT SERIES	MOTOR	GEAR HEAD	GEAR RATIO	*L inch(mm)	SCREW SET	SCREW SET PROTRUDING LENGTH *M inch(mm)	PERMISSIBLE OVERHANG LOAD			
							0.3937(10mm) FROM END OF THE OUTPUT SHAFT		0.7874(20mm) FROM END OF THE OUTPUT SHAFT	
							N	Kgf(lbs.)	N	Kgf(lbs.)
XFA BLDC SPEED CONTROL SYSTEM (DC INPUT)	XFM850G	XTG8 SERIES SEE GEARHEAD CODING SYSTEM	5	1.61(41)	M6*L65	0.58(14.8)	200	44.05(20)	300	66.08(30)
			10 , 15 , 20				300	66.08(30)	400	99.12(45)
	XFM850D		30 , 50 , 100	1.81(46)	M6*L70	0.58(14.8)	450	99.12(45)	550	121.15(55)
			200	2.01(51)	M6*L75	0.78(14.8)				

ITEM	SPEED CONTROL RANGE [r/min.]	PERMISSIBLE TORQUE-GEARED MOTOR					N-M / [kgf-cm(lb-in)]			
		20~400	10~200	6.7~133	5~100	3.3~67	2~40	1~20	0.5~10	
	GEAR RATIO	5	10	15	20	30	50	100	200	
	XFA850()-□K	0.56 4.86(5.6)	1.12 9.72(11.2)	1.68 14.58(16.8)	2.2 19.09(22)	3.2 27.77(32)	5.3 46.00(53)	10.6 92.00(106)	16.0 138.87(160)	

NOTE
 1. UNIT : INCH (mm)
 2. IP PROTECTION : IP65

DATE		SIGN		NOTE		REVISION	
MATERIAL	SURFACE FINISH	SCALE	1/1	TOLERANCE	±0.04(1.0)		
DRAWN	DESIGN	CHECK	APPR.	BLDC GEARED MOTOR ASS'Y XFA850()-□K SERIES(2/2 PAGE)			
B.H.LEE	Y.M.WON	S.H.CHA	B.Y.JEONG				
SPG Co., Ltd.				DATE	2013.05.03	DWG NO.	2X-0001-0909