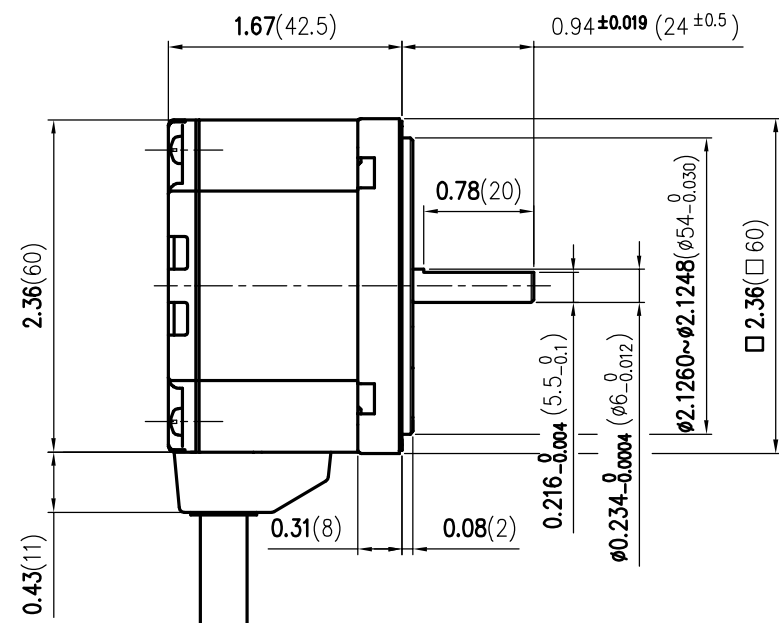
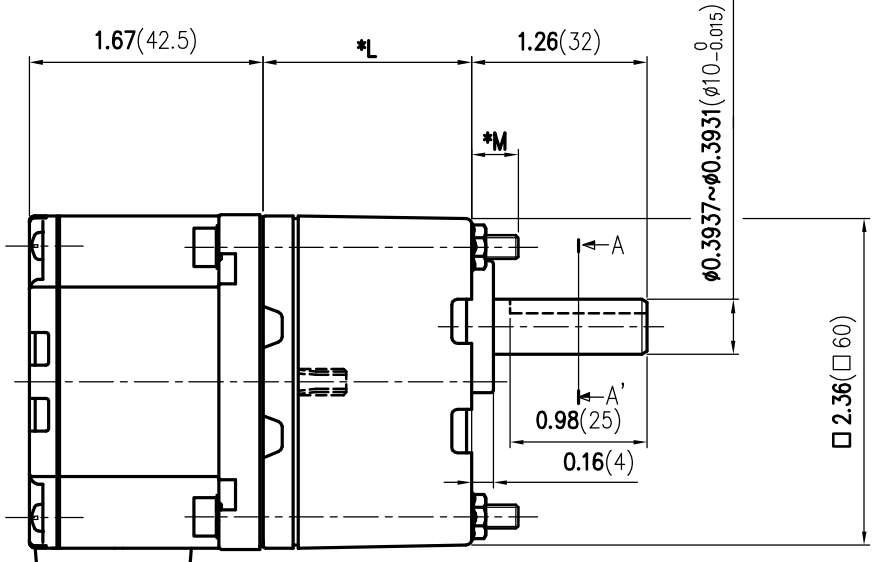


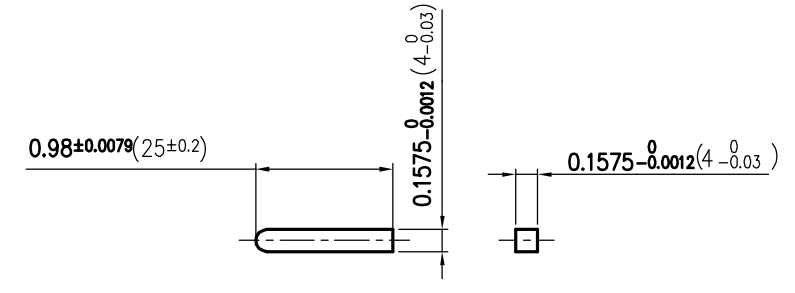
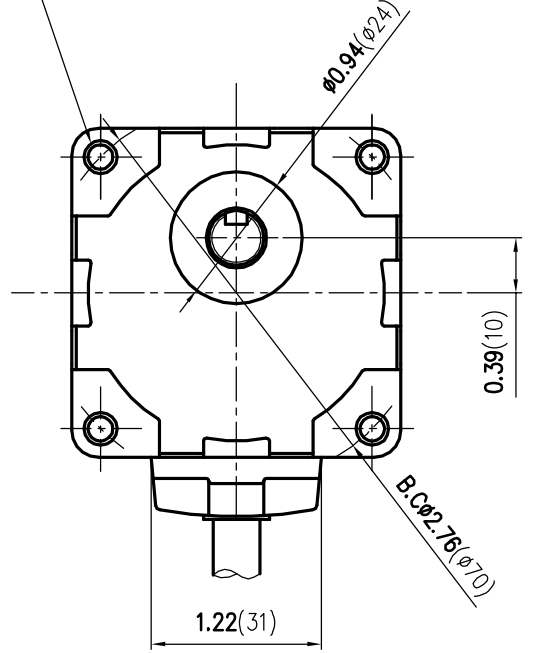
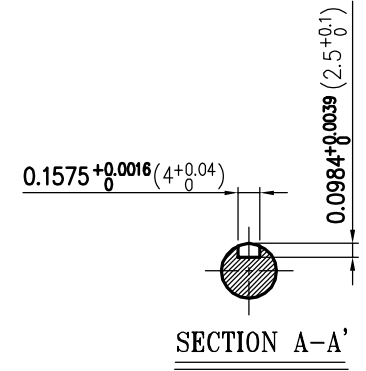
**MOTOR**



**GEARED MOTOR**



4-φ0.18(φ 4.5) THRU HOLE

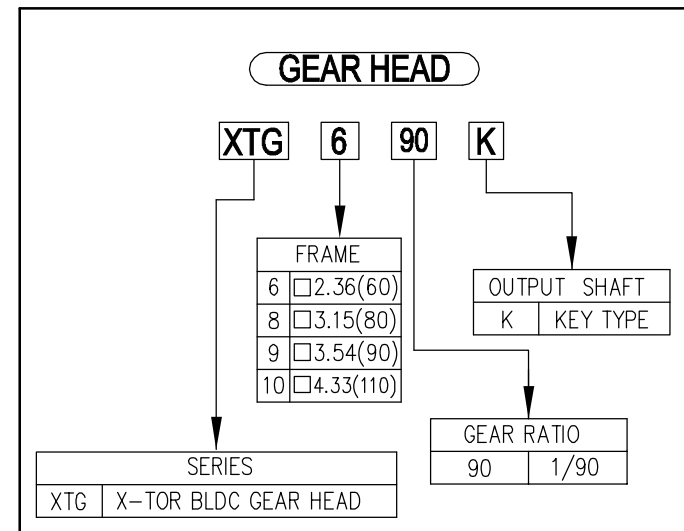
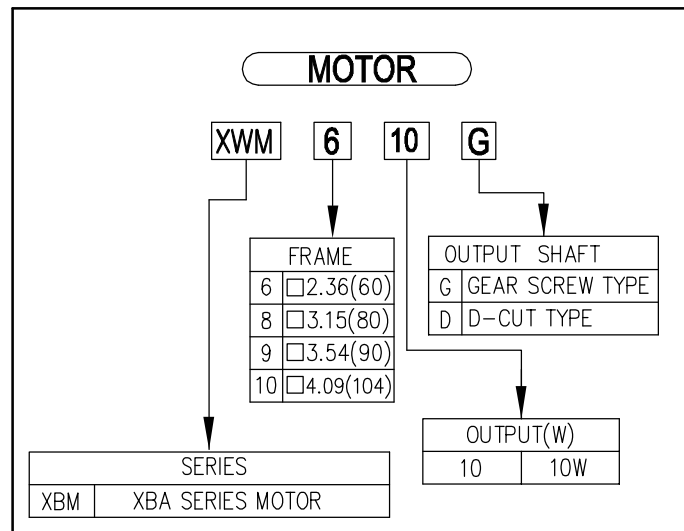


**KEY**

TERMINAL : 5556T(MOLEX)  
 CONNECTOR HOUSING : 5557-12R(MOLEX)  
 GROUND(M4)(0.17DIA.)

MOTOR CABLE φ0.31(φ8), 20inch(500mm) LENGTH

DATE	SIGN	NOTE	REVISION
DATE	SIGN	NOTE	REVISION
MATERIAL	SURFACE FINISH	SCALE	TOLERANCE
DRAWN	DESIGN	CHECK	APPR.
B.H.LEE	Y.M.WON	S.H.CHA	B.Y.JEONG
BLDC GEARED MOTOR ASS'Y XWA610()-□K SERIES(1/2 PAGE)			±0.04(1.0)
SPG Co., Ltd.		DATE: 2013.05.03	DWG NO.: 2X-0001-0899



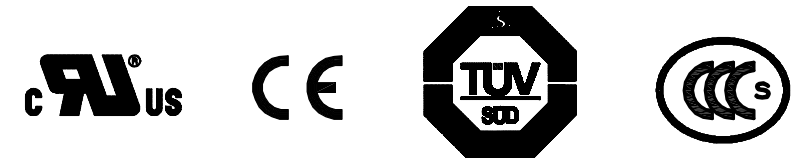
※ MOTOR / PARALLEL SHAFT GEARHEAD

PRODUCT SERIES	MOTOR	GEAR HEAD	GEAR RATIO	*L inch(mm)	SCREW SET	SCREW SET PROTRUDING LENGTH *M inch(mm)	PERMISSIBLE OVERHANG LOAD			
							0.3937(10mm) FROM END OF THE OUTPUT SHAFT		0.7874(20mm) FROM END OF THE OUTPUT SHAFT	
							N	Kgf(lbs.)	N	Kgf(lbs.)
XWA BLDC SPEED CONTROL SYSTEM (AC INPUT)	XWM610G	XTG6 SERIES SEE GEARHEAD CODING SYSTEM	5	1.34(34)	M4*L50	0.29(7.5)	100	22.03(10)	150	33.04(15)
			10, 15, 20				150	33.04(15)	200	44.05(20)
	XWM610D		30, 50, 100	1.50(38)	M4*L55	0.33(8.5)	200	44.05(20)	300	66.08(30)
			200	1.69(43)	M4*L60	0.33(8.5)				

ITEM	SPEED CONTROL RANGE [r/min.]	PERMISSIBLE TORQUE-GEARED MOTOR							
		20~400	10~200	6.7~133	5~100	3.3~67	2~40	1~20	0.5~10
	GEAR RATIO	5	10	15	20	30	50	100	200
	XBA620()-□K	0.22 1.91(2.2)	0.45 3.91(4.5)	0.68 5.90(6.8)	0.90 7.81(9.0)	1.3 11.28(13)	2.1 18.23(21)	4.2 36.45(42)	6.0 52.08(60)

**NOTE**

1. UNIT : INCH (mm)
2. IP PROTECTION : IP65
3. CERTIFICATION STATUS : UL, CE, TUV, CCC



날짜	서명	변경내용	변경이유
DATE	SIGN	NOTE	REVISION
재질	표면처리	척도	공차
MATERIAL	SURFACE FINISH	SCALE	TOLERANCE
제도	설계	검도	승인
DRAWN	DESIGN	CHECK	APPR.
B.H.LEE	Y.M.WON	S.H.CHA	B.Y.JEONG
도명		BLDC GEARED MOTOR ASS'Y	
NAME		XWA610()-□K SERIES(2/2 PAGE)	
SPG Co., Ltd.		작성일	도번
		DATE	DWG NO.
		2013.05.03	2X-0001-0899